

LITTLE PENGUINS INFO SHEET

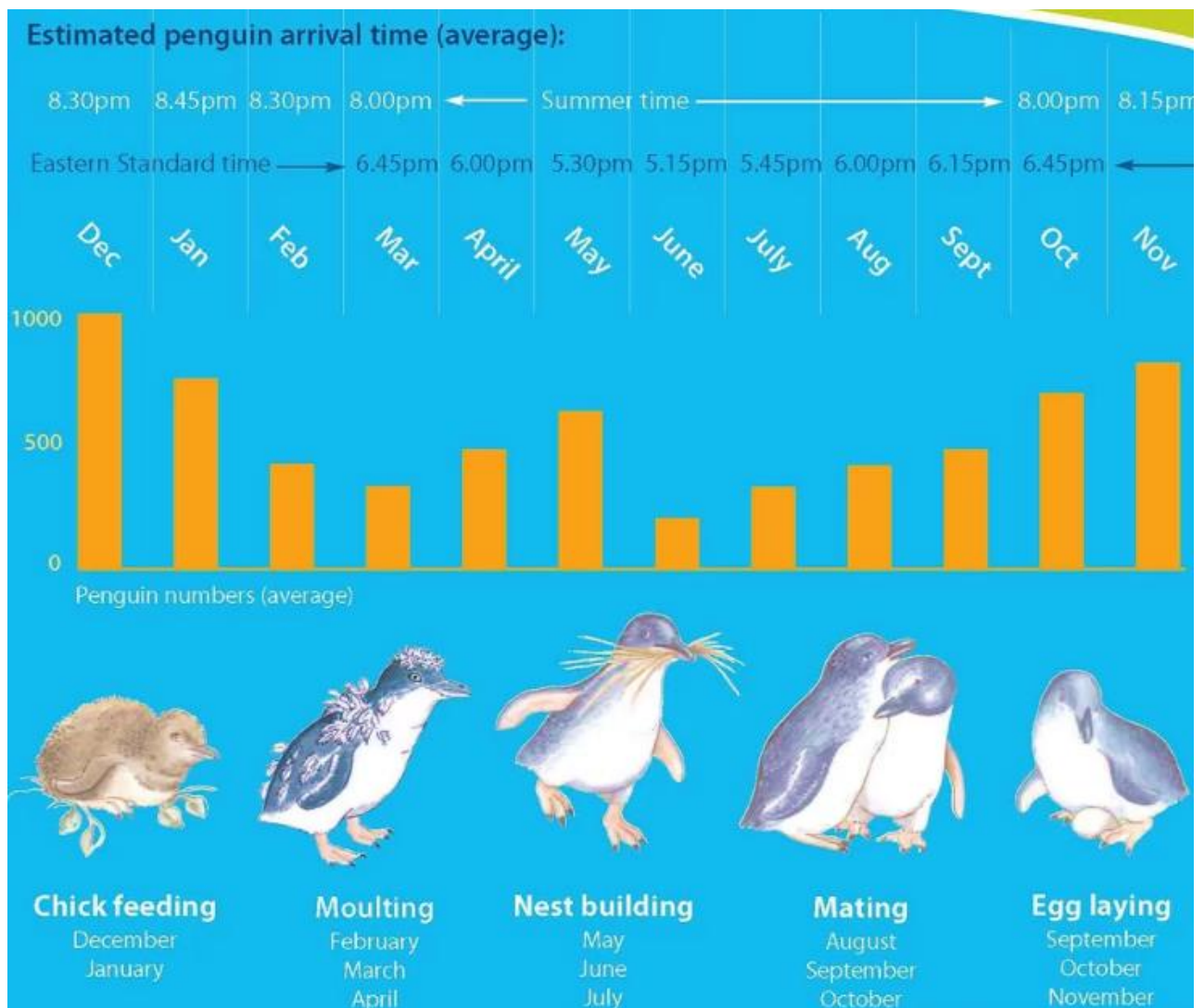


Little Penguins – also known as Fairy Penguins – are native to East Coast and Southern Australia, there is also a heavy population in New Zealand and they have been documented in places like Chile and South Africa.

The breeding program for Little Penguins is a year round process. Females' sexual maturity generally comes at two years of age, with males at three. The males will

typically renovate and prepare the nest, then compete for a partner to mate with. A couple will remain faithful during the process until eggs are hatched. A breeding female will usually mate yearly.

Depending on what time of year you stay with us at Diamond Island Resort, will depend on what you may discover – from the mating season, to laying of eggs and raising of young chicks. (see diagram below).



LITTLE PENGUINS INFO SHEET

Every night, we welcome up to 70 Penguins from the beach at Diamond Island (it varies night by night), however the entire Tasmanian population of Little Penguins is estimated to be somewhere in the vicinity of 110-190,000.

Here is a snapshot of the Little Penguin:

- Adult Height: 30-33cm (12-13 inches)
- Adult Weight: 1.5kg (3.3lb)
- Average Age: 6.5 years (have been noted up to 25 years, mainly in captivity)
- Diet: Sea-bound. Small fish (juvenile to sub-juvenile), crustaceans and squid
- From shore: Nightly, at dusk (changes month-to-month)
- To shore: Early morning at sunrise (changes month-to-month)



Diamond Island Resort loves sharing our home with these amazing animals in their natural habitat and welcomes our guests to join us nightly in welcoming them ashore!